

Ribbon Splinted Bridge for Tooth #8

A resourceful dentist replaces a central incisor in a day.

Dentaltown.com > Message Boards > Restorative Dentistry > Restorative Dentistry > Ribbon Splinted Bridge for Tooth #8 | ▶

owensdent

Member Since: 06/27/02

Post: 1 of 18

As per patient, bonded composite pontic to #7 and #9 is 12 years old. It was done intra-oral using Ribbon as a fiber reinforcement. Bridge was holding strong until her grandchild bumped the pontic with his head.

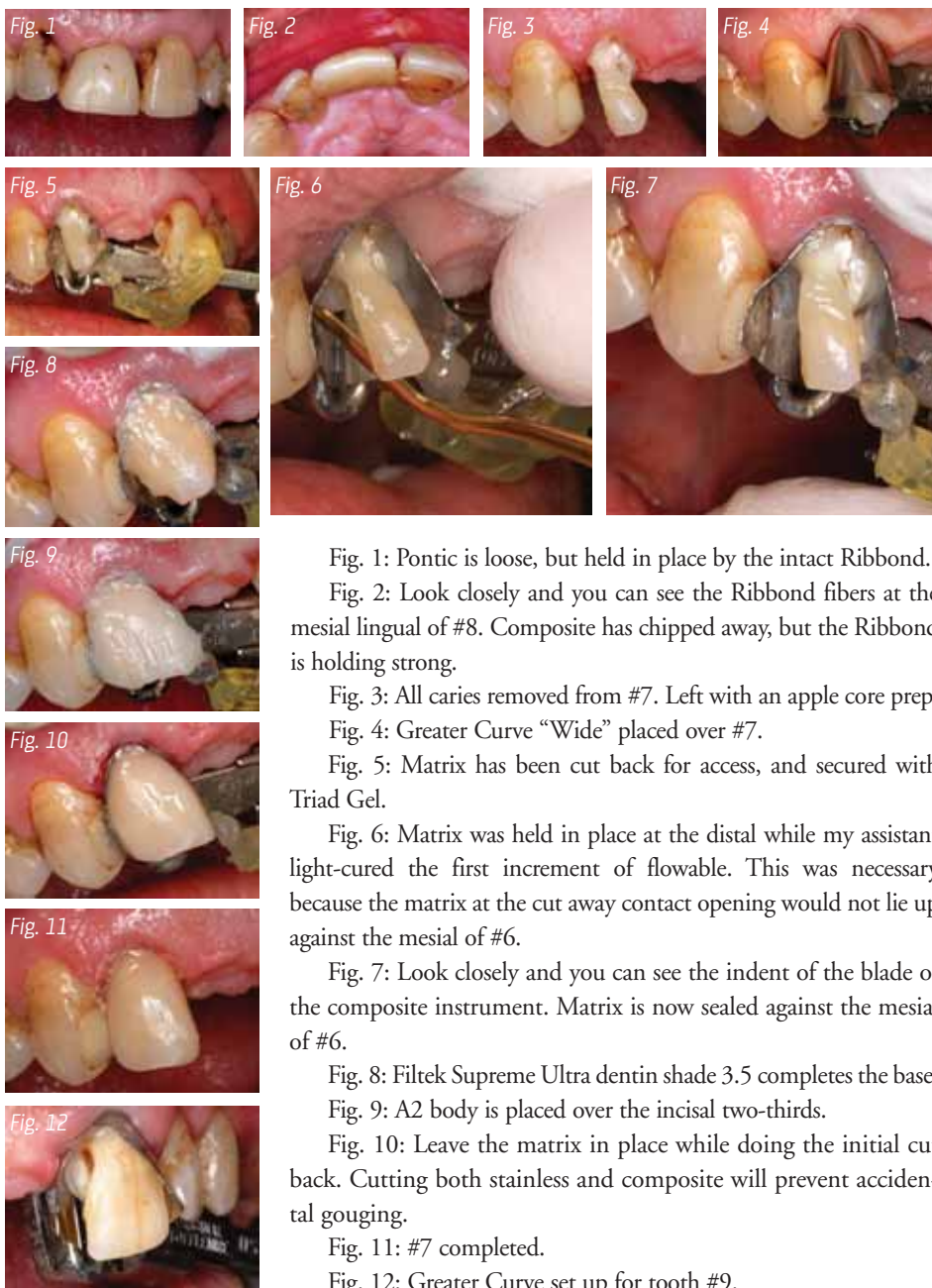


Fig. 1: Pontic is loose, but held in place by the intact Ribbon.
 Fig. 2: Look closely and you can see the Ribbon fibers at the mesial lingual of #8. Composite has chipped away, but the Ribbon is holding strong.
 Fig. 3: All caries removed from #7. Left with an apple core prep.
 Fig. 4: Greater Curve "Wide" placed over #7.
 Fig. 5: Matrix has been cut back for access, and secured with Triad Gel.
 Fig. 6: Matrix was held in place at the distal while my assistant light-cured the first increment of flowable. This was necessary because the matrix at the cut away contact opening would not lie up against the mesial of #6.
 Fig. 7: Look closely and you can see the indent of the blade of the composite instrument. Matrix is now sealed against the mesial of #6.
 Fig. 8: Filtek Supreme Ultra dentin shade 3.5 completes the base.
 Fig. 9: A2 body is placed over the incisal two-thirds.
 Fig. 10: Leave the matrix in place while doing the initial cut back. Cutting both stainless and composite will prevent accidental gouging.
 Fig. 11: #7 completed.
 Fig. 12: Greater Curve set up for tooth #9.

You can read similar discussions to this one by searching for the following message boards on Dentaltown.com.

Comments Needed Regarding Pontic Design for this Ribbon Splinted Bridge

Search: Ribbon Splinted

Natural Tooth as Pontic
 Search: Natural Tooth As

continued on page 34

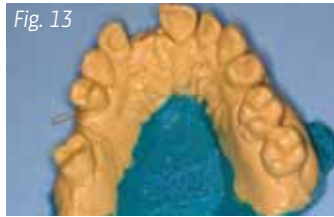


Fig. 13



Fig. 14

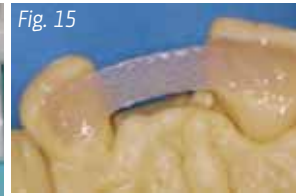


Fig. 15



Fig. 16



Fig. 17



Fig. 18



Fig. 19



Fig. 20

Fig. 13: Alginate impression poured up with polyvinyl.

Fig. 14: I use Mach-SLO (Parkell) for the teeth and use MegaBite (DenMat) for the base. MegaBite is hard like plaster and therefore makes a solid base for the more flexible Mach-SLO.

Fig. 15: Ribbond coated with flowable composite, and then light cured.

Fig. 16: Dentin shade 3.5 placed against the Ribbond on the cervical two-thirds and sloped lingually toward the incisal.

Fig. 17: A2 body placed over the dentin shade and onto the lingual to complete the pontic. A groove was made into the composite, and brown stain was placed into the depth of the groove.

Fig. 18: The A2 body was pushed together over the stain so that the stain line is now covered over within the body composite.

Fig. 19: Try in of the bridge. I do not try to make the bridge perfect on the model. This way I can make adjustments after the bridge is bonded. You can see that the incisal is too long and some contouring is needed.

Fig. 20: Final Ribbond bonded bridge. Made this bridge over my lunch hour so patient could have bridge the same day. Forgot to take an incisal view. Will post one later after patient returns.

As long as there is not a tight occlusion, a splinted bridge is a good choice. In this case the patient is a Class II with no anterior occlusion. As stated earlier, the previous bridge had a 12-year success record.

I use this technique frequently for lower anteriors opposed by an upper denture. Much better than the patient dealing with a removable partial.

To see a video of the Greater Curve technique for anterior teeth go to: http://youtu.be/hso8rSO_OCM. ■

DEC 9 2011

doctored

Member Since: 09/21/02
Posts: 2 & 3 of 18

Very nice job, Dennis. Not that it really matters, but how long did this take you? Did you do it in one day? What was the fee? You have great skills!

[Posted: December 9, 2011]

I just noticed you did the lab work during your lunch break so only the other two questions remain. Thanks for posting. I love using the Mach-SLO for projects like this. I also use MegaBite for the base of the vinyl cast. ■ Ed



DEC 9 2011

continued on page 36

owensdent

Member Since: 06/27/02
Post: 4 of 18

Thanks for the compliment. The key is to set up the Greater Curve matrix properly. The matrix does all the “hard to get to” work for you. The labial and the lingual are easy to shape, and the matrix takes care of the interproximals.

One hour 50 minutes to restore 7 & 9 plus make model. Forty minutes to make bridge on the model. Forty minutes to seat indirect composite bridge. Total time is approximately three hours.

- To restore #7 \$421
- To restore #9 \$197
- Indirect composite bridge \$750
- Total = \$1,368 ■

DEC 9 2011

lukejpowell

Member Since: 05/27/11
Post: 5 of 18

Could I ask what ADA codes you use for a Ribbond bonded bridge? I have a patient missing #10 who desires a “permanent interim” bridge until she has an implant placed. Hoping to find something Blue Cross will pay for. Thanks! ■ **Luke**

MAR 9 2012

Biomimetic

Member Since: 08/22/05
Post: 9 of 18

Nice case. I have done a few of these but I never applied the Ribbond to the model. I made a positioning putty matrix from the model and used it to hold the pontic in place while I bonded the Ribbond intra-orally with isolation (rubber dam or isolite).

Can you please describe what you did for delivery of the bridge? I’m imagining etch both abutments, air abrade the Ribbond and bond with composite and adhesive? Let me know how you delivered. ■

JUN 11 2012

RocketDoc

Member Since: 09/07/11
Post: 12 of 18

That is awesome work. I would love to learn more about using Ribbond for bonded bridges and perio splinting. Where do I go for this kind of training? ■

JUN 13 2013

owensdent

Member Since: 06/27/02
Post: 13 of 18

There is no secret to the technique. Remove a tooth from a typodont. Take an alginate and pour it up with a light body polyvinyl. Use any bite registration for a base. Now you can practice. ■ **Denny**

JUN 14 2013

Jeremy

Member Since: 05/04/06
Post: 14 of 18

... or call us at Ribbond, Inc., and I can send a model of a Ribbond bridge framework (no charge) along with information (propaganda).

Our technique video on our website shows the technique as well <http://ribbond.com/Single-Visit-Bridge.php>.

Regards,
Jeremy Rudo
Ribbond, Inc.
1-800-624-4554 ■



Click here in the digital version of our magazine to watch a video of this technique from Ribbond, Inc.

JUN 19 2013

Find it online at: www.dentaltown.com

search **Ribbond Splinted Bridge** ▶

